

# APC Back-UPS™ 700



Part Number: BE700G-UK

## Battery Backup with Surge Protection for Electronics and Computers

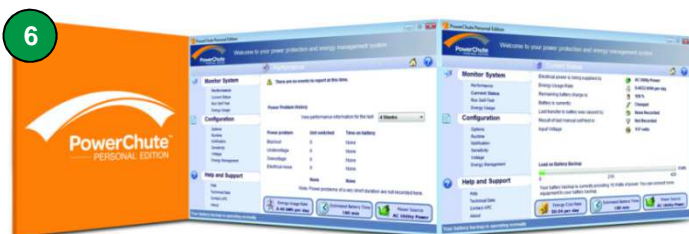
APC by Schneider Electric's Back-UPS 700 provides enough battery backup power so you can work through medium length power outages. It also safeguards your equipment against damaging surges and spikes that travel along utility and phone lines. The Back-UPS series is "greener" than ever, using an ultra-efficient design that consumes less power during normal operation than any other battery backup in its class. This reduces your energy costs and environmental impact. Combined with all of the standard features of the Back-UPS series, the 700 is the perfect unit to protect your productivity from the constant threat of bad power and lost data.

### Product Applications:

PC and home networking (wireless router, modem)  
Televisions and gaming consoles  
Projectors with impulse power  
POS Equipment  
Networking Storage (NAS)  
Landline Cordless Phone

### Product Features:

- 1 LED Indicator and Audible Alarms**  
Quickly understand the unit and power status through visual and audible indicators.
- 2 Power Saving Sockets**  
"Green mode" energy saving feature automatically powers off peripheral electronics when the master device, usually a PC, hibernates or is shut down. Power to peripherals is immediately restored when the master device wakes up or is switched on. Achieve high operating efficiency and reduce energy consumption without sacrificing any protection.
- 3 8 battery backup and surge protected sockets**
  - 4 battery backup and surge protection
  - 4 surge protection onlyKeep critical electronic equipment running when the power goes out or fluctuates at dangerous levels, so you can protect your work and save your data. Protect your secondary electronics from harmful surges and spikes without reducing battery capacity used to run primary electronics during power outages.
- 4 Data Line Surge Protection**  
Provides protection of connected equipment from damaging power surges on telephone and Ethernet data lines.
- 5 Push Button Circuit Breaker**  
Provides for easy recovery from circuit overloads and protects your fuse box and electronics from electrical damage.
- 6 USB Connection and PowerChute Software**  
Use your PC to access additional power protection and management features for your Back-UPS 700 via a USB Port.



**APC**  
by Schneider Electric

## Back-UPS 700 Specifications

Model Number	BE700G-UK
<b>Output</b>	
Output Capacity	700 VA / 405 Watts
Output Voltage / Frequency (On utility)	230V / 47-63 Hz
Output Voltage / Frequency (On battery)	230V +/-8%, 50Hz +/- 0.1% for 50Hz nominal
Output Connections	8 BS 1363 Sockets (4 battery backup and surge protection, 4 surge protection only)
Waveform Type	Stepped Approximation to Sine Wave
<b>Input</b>	
Input Voltage / Frequency	230V / 50/60 Hz
Input Connection	1.83M power cord French/Belgian
<b>Surge Protection</b>	
AC Power Surge Protection	All sockets
Data Line Surge Protection	Analog phone line for phone/fax/modem/DSL (RJ-11 connector), Network line - 10/100 Base-T Ethernet (RJ-45 connector)
<b>Physical</b>	
Unit Dimensions (H x W x D)	89 x 224 x 311 mm
Unit Weight	6.93 Kg
Shipping Dimensions (H x W x D)	127 x 279 x 400 mm
Shipping Weight	7.84 Kg
Color	Black
UPC Code	731304268345
<b>Battery</b>	
Battery Type	Maintenance-free, sealed lead-acid battery, leak proof
Battery Size	12 volt, 9 Ah
<b>Management</b>	
Alarms	Visual (LED) and audible alarms
Auto Shutdown Software	Power Chute Personal Edition (with USB and serial interface)
Warranty	2 years repair or replace, 3 years repair or replace for European Union countries
Equipment Protection Policy	Lifetime: 50000 GBP (not available in all regions)

**APC by Schneider Electric**

132 Fairgrounds Rd  
West Kingston, RI 02892

[www.apc.com](http://www.apc.com)

**APC**<sup>®</sup>  
by Schneider Electric