



EVX series EVX 12170



Valve Regulated Lead Acid Battery

Maintenance-Free Sealed Lead Acid Battery.
Absorbent Glass Mat (AGM) technology for efficient gas recombination of up to 99%.

General Design for Cyclic Applications

【Design Life】

- 400 cycles @ 100%DOD at 25°C
- 1800 cycles @ 30%DOD at 25°C

【Operating Temperature Range】

- Nominal Operating Temperature : 25°C (77°F)
- Discharge : -15°C ~ 50°C (5°F~122°F)
- Charge: -15°C ~ 40°C (5°F~104°F)
- Storage: -15°C ~ 40°C (5°F~104°F)

【Equalization Charging Voltage】

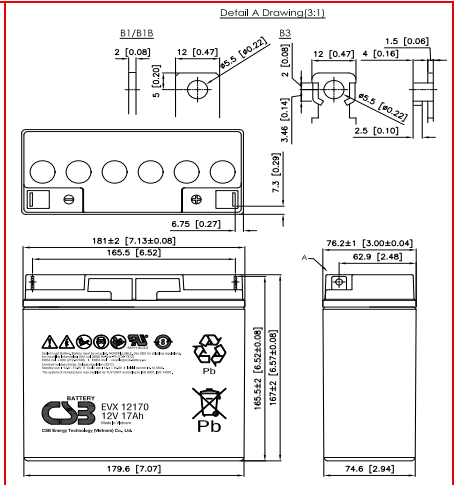
14.4 ~ 15.0 VDC/Unit at 25°C (77°F)

【Self Discharge】

Less than 10% after 90 days, can be stored up to 6 months at 25°C (77°F); Fully recharging is required before usage, and charged sooner if stored at higher temperature than 25°C (77°F).

Specification

| | | |
|----------------------------|---|-------------------------------|
| Nominal Voltage | 12V (6 cells per unit) | |
| Nominal Capacity | 17 AH @20HR-rate to 1.75V per cell @25°C (77°F) | |
| Weight | Approx. 5.67 Kg (12.50 lbs) | |
| Maximum Discharge Current | 230A (5sec) | |
| Internal Resistance | Approx. 13.3 mΩ | |
| Short Circuit Current | -- | |
| Maximum Charge Current | 5.10A | |
| Terminal types | B1/B1B/B3 terminal to accept M5 bolt | |
| Terminal tightening torque | 30.4±6.1 Kgf·cm / 26.4±5.3 Lbf·in / 3.0±0.6 N·m | |
| Container Material | ABS (UL 94-HB) | |
| Dimensions | Length (L) | 181.0±2.0 mm / 7.13±0.08 inch |
| | Width (W) | 76.2±1.0 mm / 3.00±0.04 inch |
| | Container Height (h) | 167.0±2.0 mm / 6.57±0.08 inch |
| | Overall Height (H) | 167.0±2.0 mm / 6.57±0.08 inch |
| | | |



Constant Current Discharge Characteristics Unit: A (25°C, 77°F)

| F.V/Time | 30MIN | 45MIN | 60MIN | 90MIN | 2HR | 3HR | 4HR | 5HR | 6HR | 8HR | 10HR | 20HR |
|----------|-------|-------|-------|-------|------|------|------|------|------|------|------|------|
| 1.60V | 17.0 | 12.7 | 10.3 | 7.34 | 5.94 | 4.43 | 3.55 | 2.92 | 2.51 | 1.98 | 1.63 | 0.93 |
| 1.67V | 16.5 | 12.3 | 9.94 | 7.14 | 5.77 | 4.28 | 3.43 | 2.84 | 2.44 | 1.92 | 1.58 | 0.90 |
| 1.70V | 16.0 | 11.9 | 9.67 | 6.91 | 5.62 | 4.16 | 3.34 | 2.76 | 2.37 | 1.87 | 1.54 | 0.88 |
| 1.75V | 15.5 | 11.6 | 9.38 | 6.70 | 5.43 | 4.04 | 3.24 | 2.68 | 2.30 | 1.81 | 1.49 | 0.85 |
| 1.80V | 15.0 | 11.2 | 9.08 | 6.48 | 5.25 | 3.91 | 3.14 | 2.59 | 2.22 | 1.75 | 1.44 | 0.83 |
| 1.85V | 14.5 | 10.8 | 8.79 | 6.27 | 5.09 | 3.79 | 3.04 | 2.51 | 2.15 | 1.69 | 1.39 | 0.80 |

Constant Power Discharge Characteristics Unit: W (25°C, 77°F)

| F.V/Time | 30MIN | 45MIN | 60MIN | 90MIN | 2HR | 3HR | 4HR | 5HR | 6HR | 8HR | 10HR | 20HR |
|----------|-------|-------|-------|-------|------|------|------|------|------|------|------|------|
| 1.60V | 204 | 152 | 123 | 88.1 | 71.6 | 53.1 | 42.6 | 35.0 | 30.1 | 23.8 | 19.6 | 10.8 |
| 1.67V | 198 | 148 | 120 | 85.5 | 69.5 | 51.3 | 41.3 | 34.1 | 29.3 | 23.1 | 18.8 | 10.4 |
| 1.70V | 192 | 143 | 116 | 82.9 | 67.9 | 49.9 | 40.1 | 33.1 | 28.4 | 22.4 | 18.5 | 10.2 |
| 1.75V | 186 | 139 | 113 | 80.4 | 65.5 | 48.4 | 38.9 | 32.1 | 27.6 | 21.7 | 17.9 | 9.90 |
| 1.80V | 180 | 134 | 109 | 77.8 | 63.3 | 46.9 | 37.7 | 31.1 | 26.7 | 21.0 | 17.3 | 9.59 |
| 1.85V | 174 | 130 | 106 | 75.3 | 61.4 | 45.4 | 36.5 | 30.1 | 25.8 | 20.3 | 16.7 | 9.29 |

Please refer to the official site for the latest rating confirmation. URL: www.csb-battery.com

Issued: 200930

Sales Offices

希世比能源科技股份有限公司
CSB Energy Technology Co., Ltd.

BUSINESS HEADQUARTERS

Tel: +886-2-2880-5600
Fax: +886-2-2888-3300

USA OFFICE

Tel: +1-817-244-7777 / 1-(800)3-CSB-USA (272872)
Fax: +1-817-244-4445

SHENZHEN OFFICE (CHINA)

Tel: +86-755-8831-6488/6775/6075
Fax: +86-755-8831-6548

EUROPE (EMEA) OFFICE

Tel: +31(0)180-418-140
Fax: +31(0)180-418-327

SHANGHAI OFFICE (CHINA)

Tel: +86-21-5046-1622/0833/0094
Fax: +86-21-5046-1046

Recognized under UL 1989,
and certified by ISO 9001, 14001, 45001, 50001.



TAIPEI OFFICE

Tel: +886-2-2880-5600
Fax: +86-2-2888-3300

BEIJING OFFICE (CHINA)

Tel: +86-10-6597-8065/8165/8265
Fax: +86-10-6597-8565