



GP series

GP 12200 12V 20AH



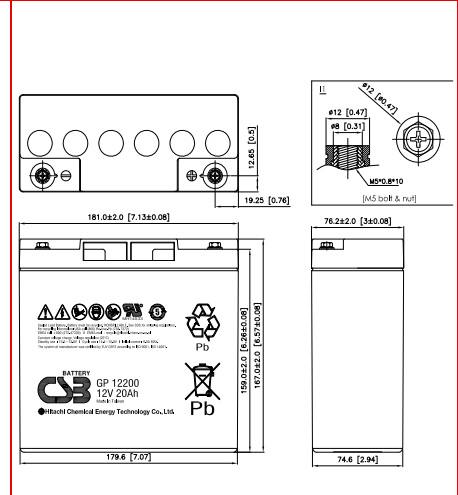
Valve Regulated Lead Acid Battery

Maintenance-Free Sealed Lead Acid Battery.
Absorbent Glass Mat (AGM) technology for efficient gas recombination of up to 99%.

Design for Standby Power Applications

<p>【Design Life】 Up to 5 Years in Standby Service at 25°C Eurobat (20°C) : 3-5 years, Standard Commercial</p> <p>【Operating Temperature Range】 Nominal Operating Temperature : 25°C (77°F) Discharge : -15°C ~ 50°C (5°F~122°F) Charge: -15°C ~ 40°C (5°F~104°F) Storage: -15°C ~ 40°C (5°F~104°F)</p>	<p>【Float Charging Voltage】 13.5 ~ 13.8 VDC/Unit at 25°C (77°F)</p> <p>【Equalization Charging Voltage】 14.4 ~ 15.0 VDC/Unit at 25°C (77°F)</p> <p>【Self Discharge】 Less than 10% after 90 days, can be stored up to 6 months at 25°C (77°F); Fully recharging is required before usage, and charged sooner if stored at higher temperature than 25°C (77°F).</p>
--	---

Specification		Design according with IEC 61056-1/2: 2012	
Nominal Voltage	12V (6 cells per unit)		
Nominal Capacity	20 Ah @20hr-rate to 1.75V per cell @25°C (77°F)		
Weight	Approx. 6.40 Kg (14.11 lbs)		
Maximum Discharge Current	230A (5sec)		
Internal Resistance	Approx. 13.6mΩ		
Short Circuit Current	614A		
Maximum Charge Current	6.00A		
Terminal types	I1 thread lead alloy terminal to accept M5 bolt		
Terminal hardware Torque	59 Kgf-cm / 51 Lbf-in / 5.73 N-m		
Container Material	ABS (UL 94-HB) & Flame Retardant (94-V0) available upon request		
Dimensions	Length (L)	181.0±2.0 mm	7.13±0.08 inch
	Width (W)	76.2±1.0 mm	3.00±0.04 inch
	Container Height (h)	167.0±2.0 mm	6.57±0.08 inch
	Overall Height (H)	167.0±2.0 mm	6.57±0.08 inch



Constant Current Discharge Characteristics Unit: A (25°C, 77°F)

F.V/Time	5 MIN	10MIN	15MIN	30MIN	60MIN	90MIN	2HR	3HR	5HR	8HR	10HR	20HR
1.60V	87.5	55.5	42.3	25.5	15.1	11.0	8.75	6.23	3.97	2.62	2.10	1.09
1.67V	77.7	51.8	39.7	24.9	15.0	10.9	8.69	6.22	3.94	2.60	2.07	1.04
1.70V	73.5	50.2	38.7	24.7	14.9	10.9	8.67	6.20	3.93	2.60	2.05	1.03
1.75V	66.4	47.0	37.1	24.2	14.8	10.7	8.54	6.17	3.92	2.59	2.03	1.00
1.80V	59.3	43.8	35.2	23.8	14.5	10.6	8.42	6.12	3.91	2.58	2.00	0.96
1.85V	52.2	40.5	33.7	23.2	14.3	10.4	8.29	6.07	3.90	2.57	1.96	0.92

Constant Power Discharge Characteristics Unit: W (25°C, 77°F)

F.V/Time	5MIN	10MIN	15MIN	30MIN	60MIN	90MIN	2HR	3HR	5HR	8HR	10HR	20HR
1.60V	1050	666	507	306	181	132	105	74.7	47.6	31.4	25.2	13.1
1.67V	932	621	481	301	179	130	104	74.6	47.3	31.3	24.9	12.5
1.70V	882	602	466	299	178	129	103	74.3	47.2	31.2	24.8	12.3
1.75V	797	564	446	292	176	128	102	74.0	47.1	31.1	24.4	11.9
1.80V	712	525	421	285	174	126	101	73.4	46.9	31.0	24.0	11.5
1.85V	627	487	404	278	171	125	100	72.8	46.8	30.9	23.6	11.1

Please refer to the official site for the latest rating confirmation. URL: www.csb-battery.com

Issued: 170201

Sales Offices
日立化成能源科技股份有限公司
 Hitachi Chemical Energy Technology Co., Ltd.

Recognized under UL 1989,
and certified by ISO 9001, 14001.



BUSINESS HEADQUARTERS

Tel: +886-2-2880-5600
Fax: +866-2-2888-3300

USA OFFICE

Tel: +1-817-244-7777 / 1-(800)3-CSB-USA (272872)
Fax: +1-817-244-4445

SHENZHEN OFFICE (CHINA)

Tel: +86-755-8831-6488, 8831-6775
Fax: +86-755-8831-6075

EUROPE (EMEA) OFFICE

Tel: +31(0)180-418-140
Fax: +31(0)180-418-327

SHANGHAI OFFICE (CHINA)

Tel: +86-21-5046-1622, 5046-0833
Fax: +86-21-5046-1046

TAIPEI OFFICE

Tel: +886-2-2880-5600
Fax: +866-2-2888-3300

BEIJING OFFICE (CHINA)

Tel: +86-10-5820-5336, 5820-5338
Fax: +86-10-5820-3053